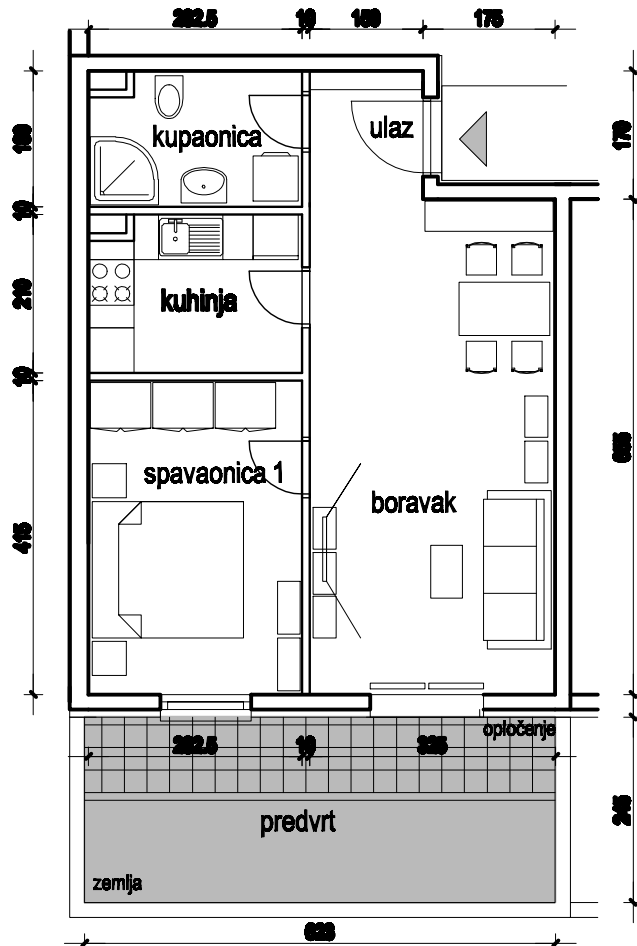


ELANIJA d.o.o.

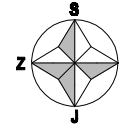
STAMBENO POSLOVNA GRAĐEVINA
ŽNJAN M1-1, SPLIT

C:\Documents and Settings\Dux\Desktop\2010 Elanija\Prospekti\H02-crop.jpg

JEDNOSOBNI STAN 50,20m²



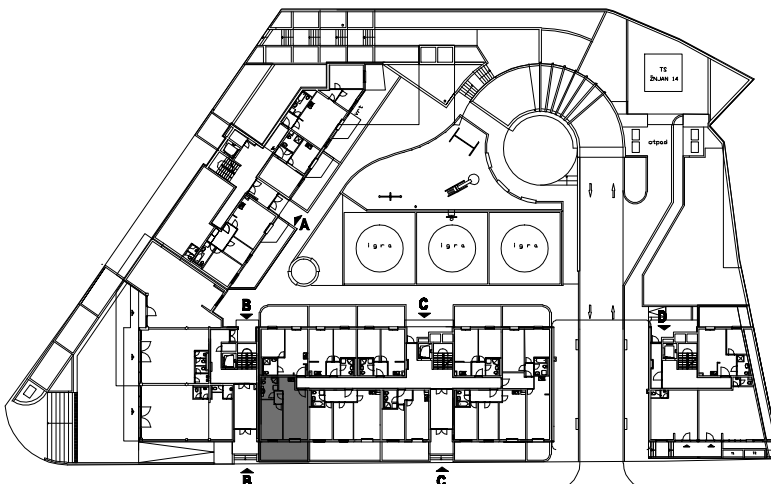
orijentacija: JUG



JUŽNA FASADA

stan C.0.6.

priz.



ulaz	2,62 m ²
kuhinja	5,73 m²
boravak	21,44 m ²
spavaonica	11,72 m ²
kupaonica	4,87 m ²
predvrt	15,28x0,25 3,82 m ²

stan ukupno netto 50,20m²