

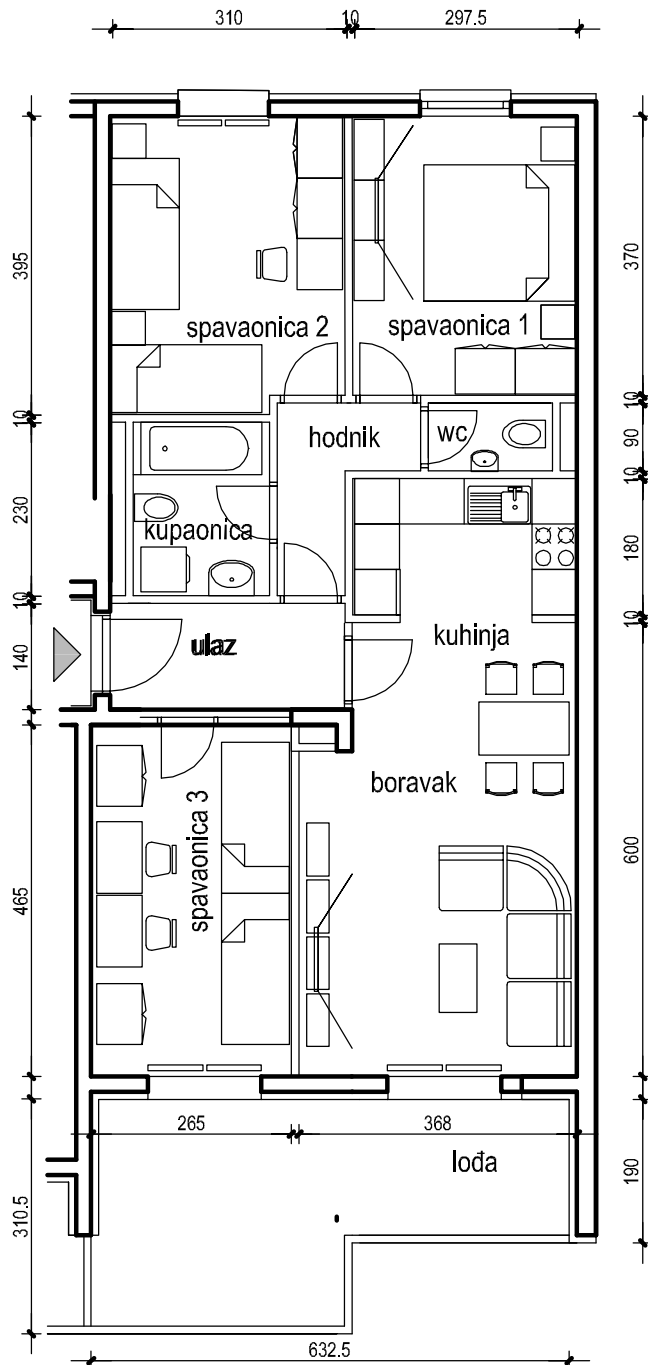
ELANIJA d.o.o.

**STAMBENO POSLOVNA GRAĐEVINA
ŽNJAN M1-1, SPLIT**

TROSOBNI STAN 87,31m²

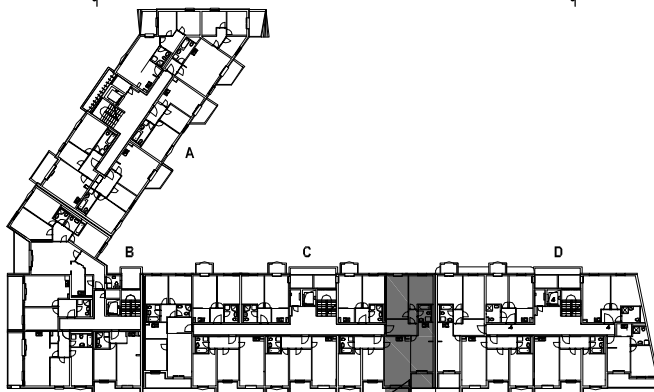


orijentacija: JUG/SJEVER



stan C.6.2. 6.kat
C.5.2. 5.kat

ulaz	4,76 m ²
hodnik	3,56 m ²
boravak/kuhinja	26,38 m ²
spavaonica 1	11,00 m ²
spavaonica 2	12,00 m ²
spavaonica 3	12,32 m ²
kupaonica	4,14 m ²
wc	1,30 m ²
lođa	15,57x0,75 11,67 m ²



stan ukupno netto 87,31m²